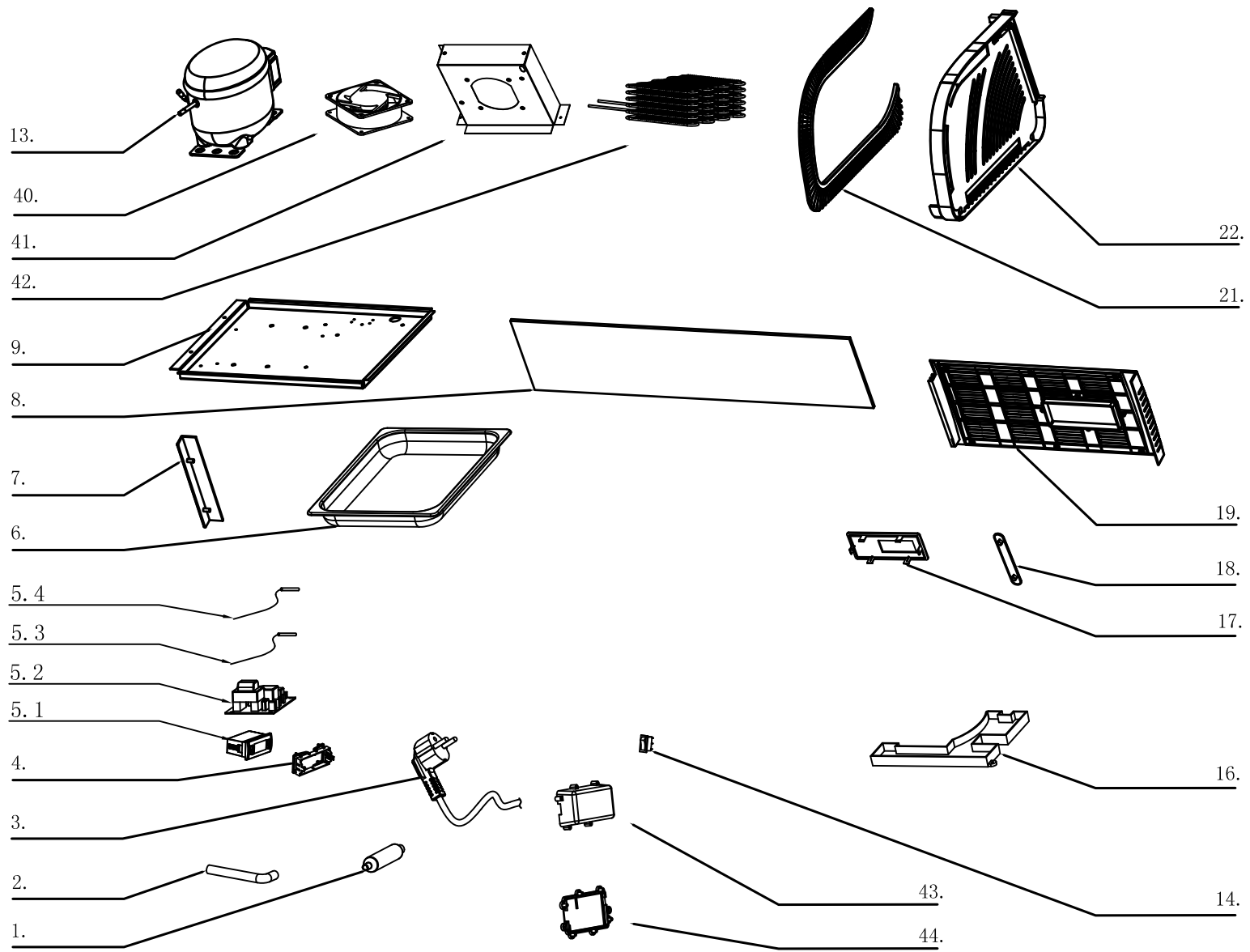
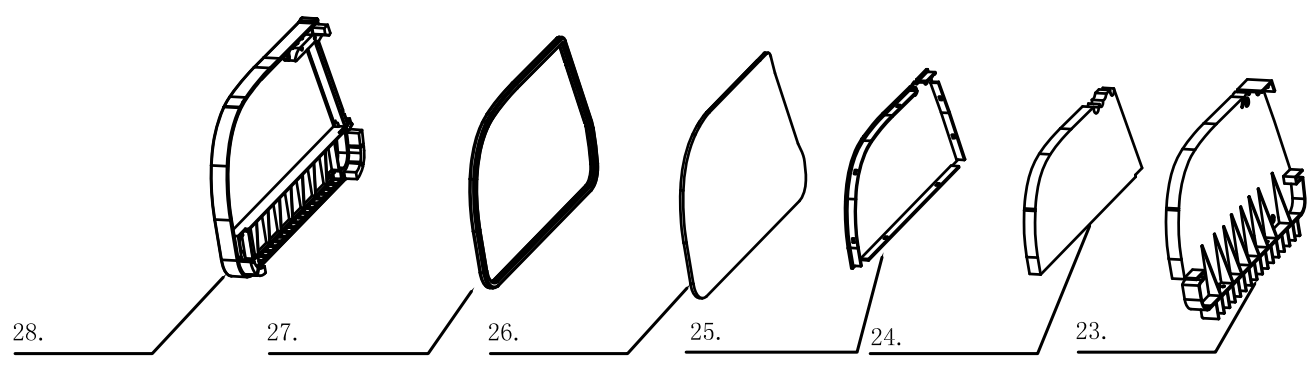
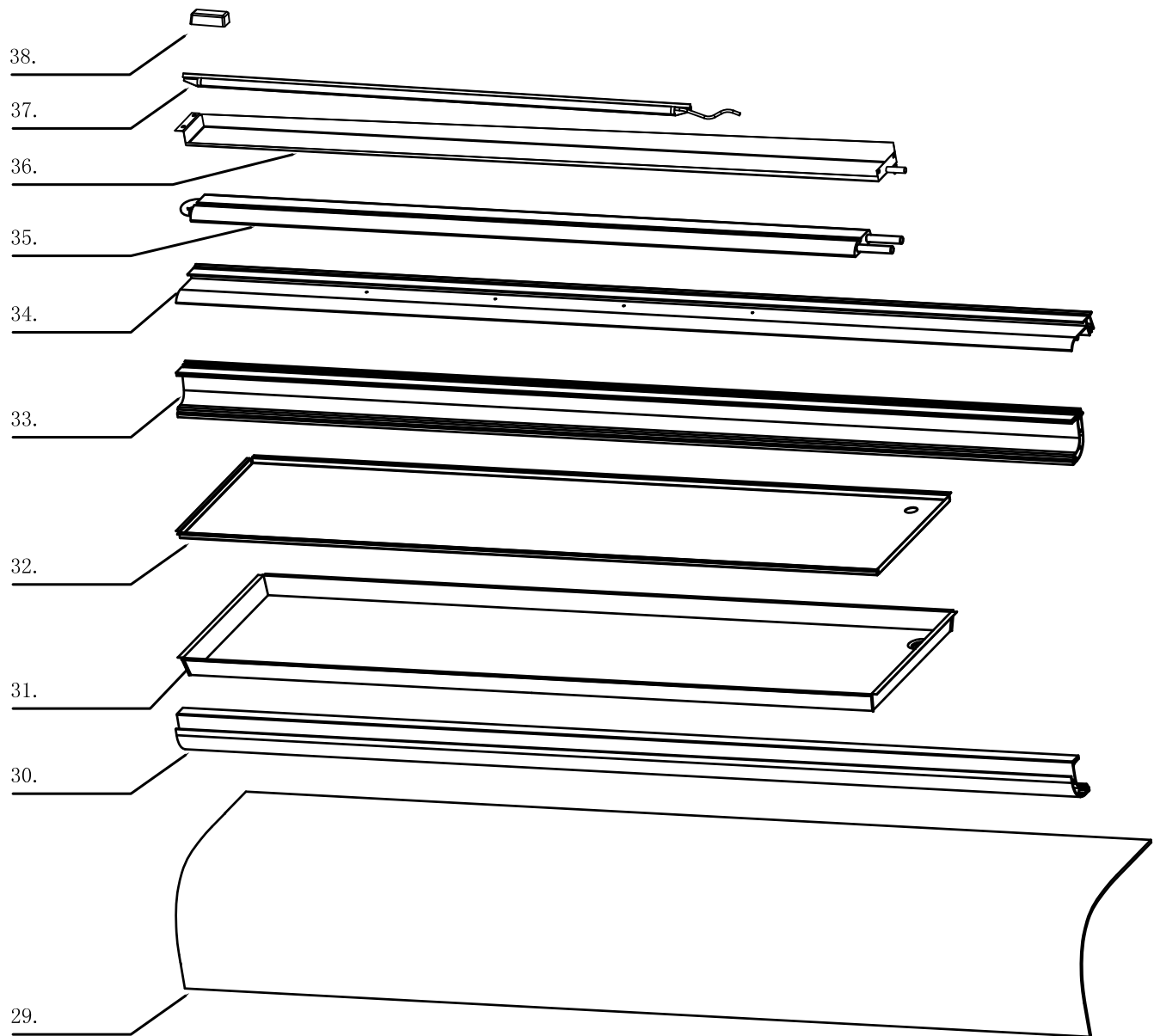


# EXPLOSIONSZEICHNUNG



KBS Gastrotechnik GmbH – Schoßbergstraße 26 – 65201 Wiesbaden



NO:	Description
1	Dry filter
2	Water Pipe
3	Power cord
5.1	Temperature Display
5.2	Main Circuit Board
5.3	Defrost probe
5.4	Temperature probe
6	1/3 GN Pan
7	Finger clamp of glass
8	Door glass
9	Bottom panel of compressor
13	Compressor
14	Switch
16	Water tray
17	Switch Panel
18	handle
19	Rear plastic panel
21	Decorating plate
22	Left plastic panel
23	Middle separator
24	Foam of middle separator
25	Cover of middle separator
26	Side glass
27	Glass silica ring
28	Bracing piece of Rack
29	Curved front glass
30	Front pillar
31	Stainless steel plate
32	Bottom panel
33	Rear pillar
34	Upper pillar
35	TOP Evaporator
36	TOP Water tray
37	LED Lights
38	LED Power
40	Fan motor
41	Board for condenser
42	Condenser
43	Cirulit board box
44	Box cover