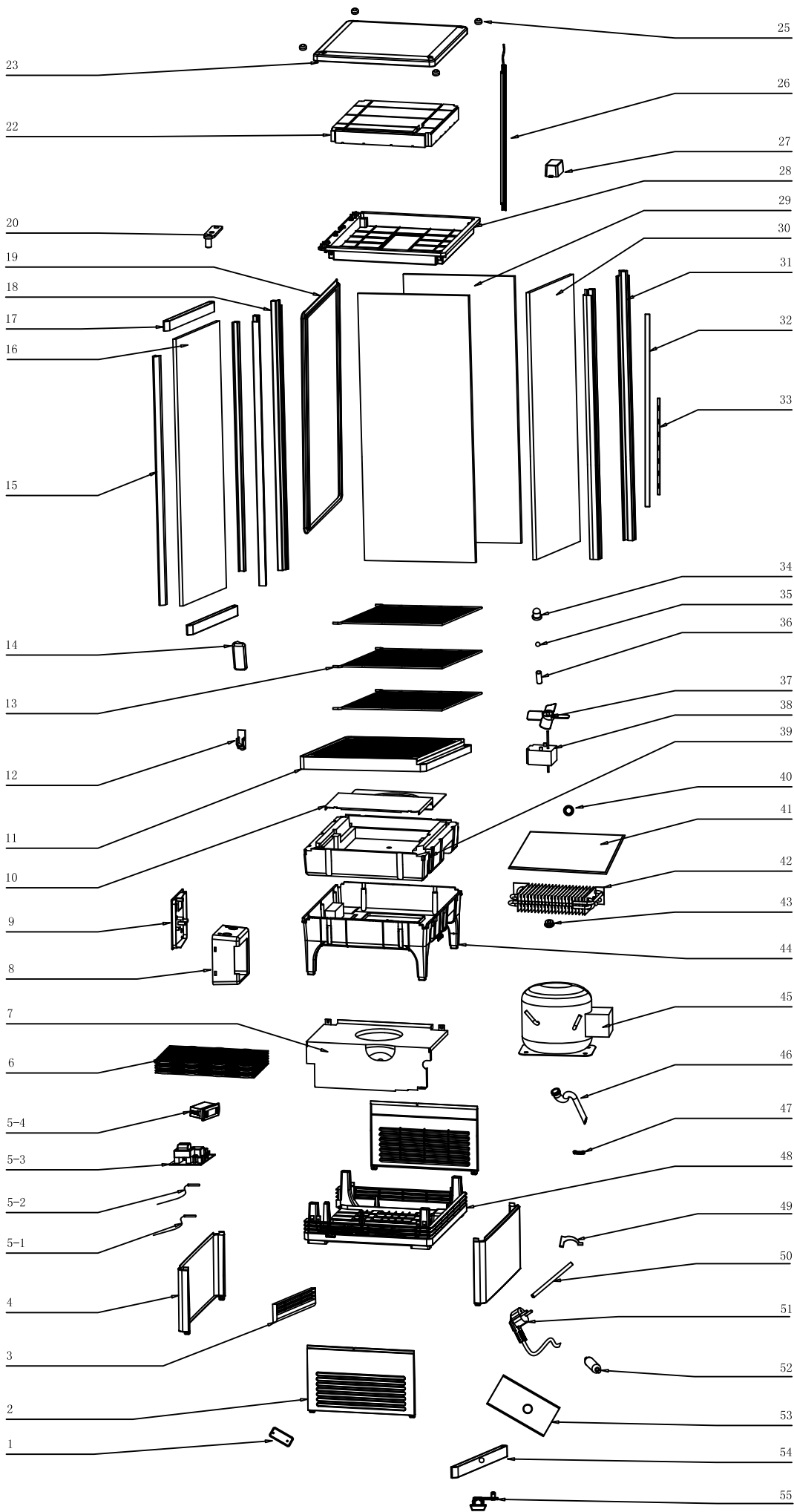


# EXPLOSIONSZEICHNUNG



KBS Gastrotechnik GmbH – Schoßbergstraße 26 – 65201 Wiesbaden



55	Lock
54	Upper door frame
53	Metal base of fan motor
52	Dry filter
51	Power cord
50	Charging pipe
49	Pipe clip
48	Plastic fence
47	Wire board
46	Upper/Bottom seep tube
45	Compressor
44	Plastic base
43	Motor fixed ring
42	Evaporator
41	Evaporator tray
40	Fan blade spring
39	Foam base of evaporator
38	motor fan
37	Fan blade
36	Door pin
35	Steel ball
34	Bush
33	Top and bottom stainless iron piece
32	Side stainless iron piece
31	Back Pole
30	Back glass
29	Side glass
28	Light ceiling
27	Led Power Drive
26	LED Light
25	Screw cover
23	Upper cover
22	Lamp insert foam
20	Upper gemel
19	Door gasket
18	Front pole
17	Upper door frame
16	Door glass
15	Right and left door pole
14	Handle
13	Shelf
12	Shelf clip
11	Vent tray
10	Evaporator protect board
9	Control panel
8	Control box
7	cushion of Condensator
6	Condensator
5-4	Temperature Display
5-3	Main Circuit Board
5-2	Defrost probe
5-1	Temperature probe
4	Front grill
3	Plastic door
2	Side grill
1	Base feet
No:	Des