

# TECHNISCHE DOKUMENTATION



KBS Gastrotechnik GmbH – Schoßbergstraße 26 – 65201 Wiesbaden



# T5

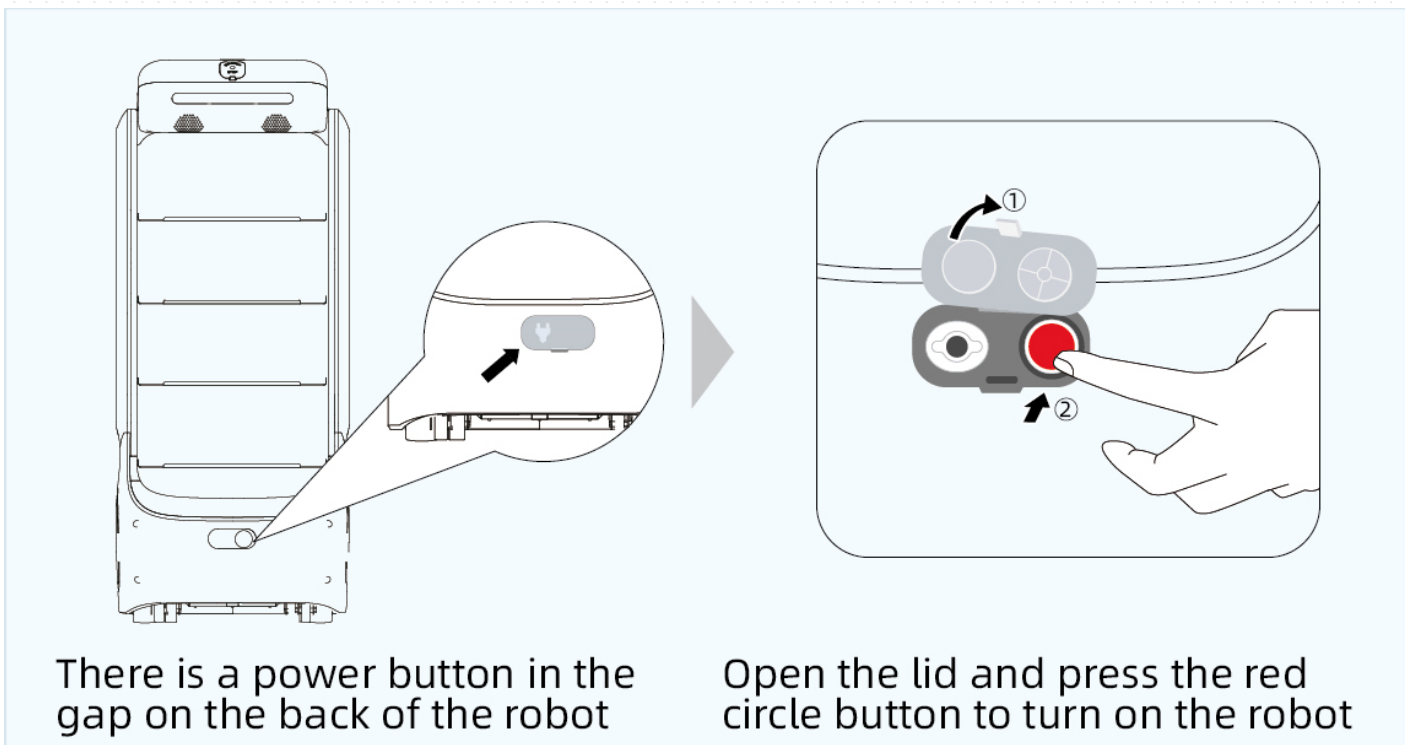
## Quick Guide



# T5 Quick Guide



Turn on method



There is a power button in the gap on the back of the robot

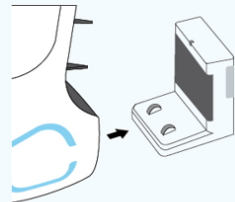
Open the lid and press the red circle button to turn on the robot

# T5 Quick Guide

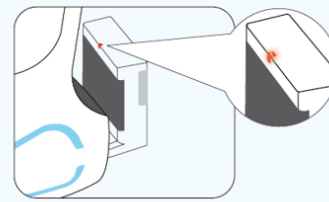


The robot won't turn on

## 1、 No power-use charging station to charge the robot

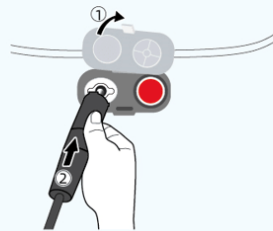


Push the robot on the charging station

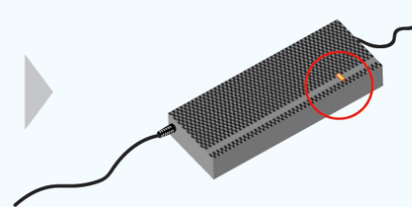


You will see **red light** on the charging station

## 2、 No power-use charger to charge the robot



Open the cover and plug the charger cable

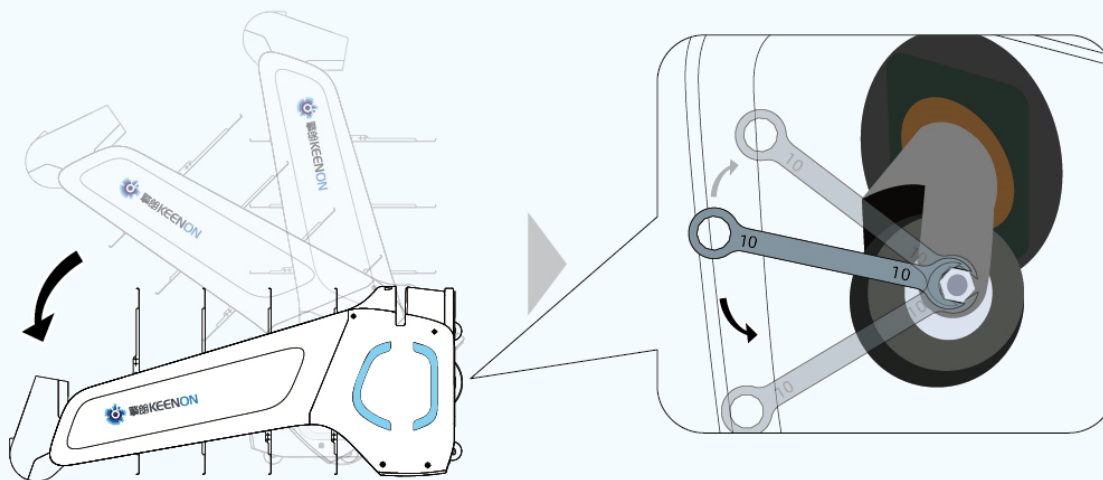


The **red light** on the charger means charging

# T5 Quick Guide



## Cleaning Swivel Castor Wheels



Tilt the robot backwards, then clean it.

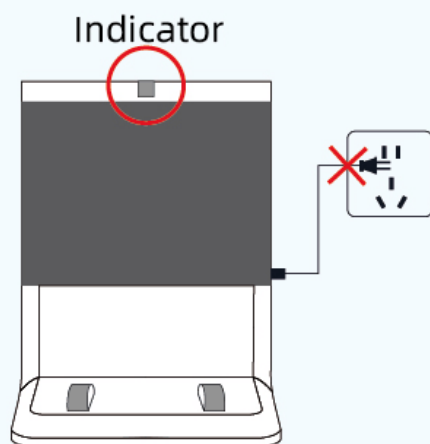
You can also remove the universal wheel by wrench (size 10) to clean it easily.

## T5 Quick Guide

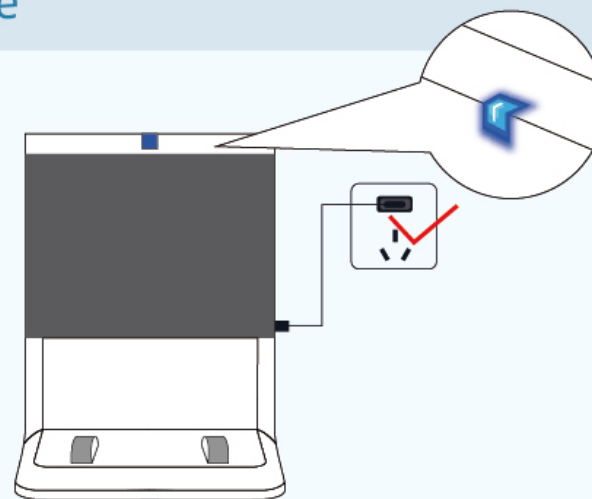


The robot won't auto-charge

### 1、No power-use charging station to charge



Forget to plug the power cable of the charging station (no light on the charging station)



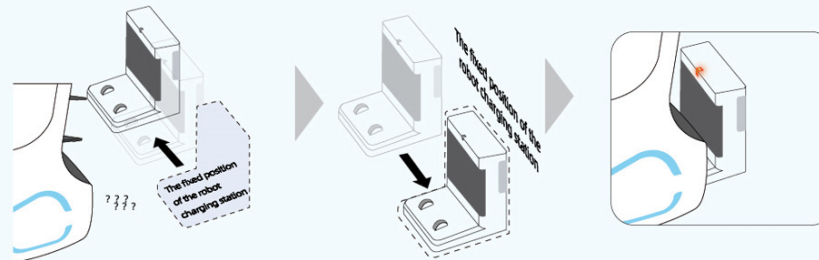
You will see **blue light** after plugging the power cable of the charging station

# T5 Quick Guide



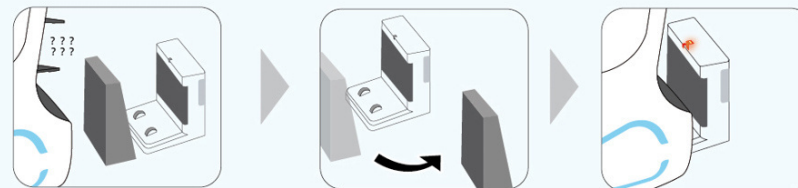
The robot won't auto-charge

## 2. The charging station has been moved, the robot can't find the charging point



If the charging station has been moved away, you need to move the charging station back to its ancient position

## 3. Obstacle in front of charging station



If there is an obstacle in front of the charging station

Robot will charge after removing the obstacle

# T5 Quick Guide

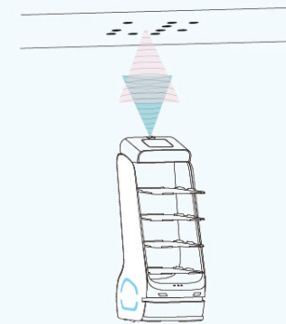


The robot won't operate

## 1、 Robot can't find its way



Check if the robot is not in the range of label area

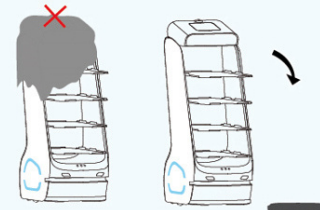


You need to push the robot to the place with labels on the ceiling, then restart the robot

## 2、 Robot vision is blocked



The robot can't see the labels



Check if something covered on the robot, please remove it.





*Thanks*

