

ONNERA POLAND

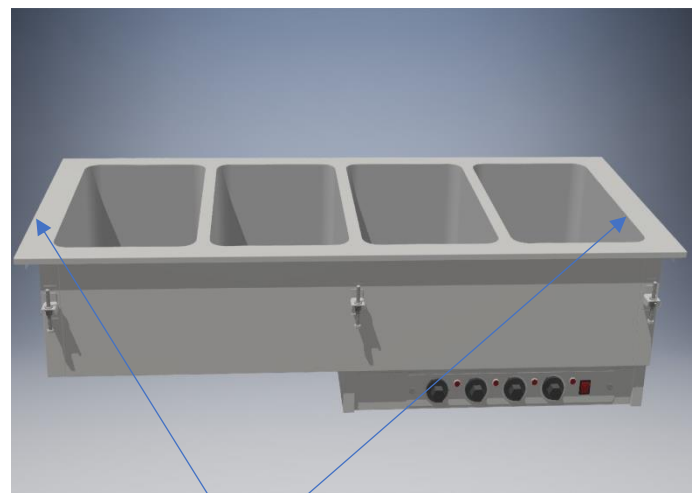
DBM

DU

Assembly guide

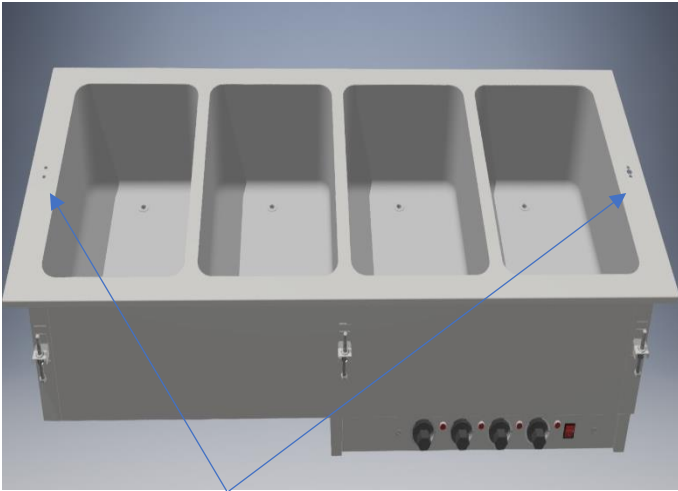


Finish Assembly



DBM, Drill holes, under upper surface is a pattern.

ONNERA POLAND



Holes to install DU on.



Pattern to drill holes.

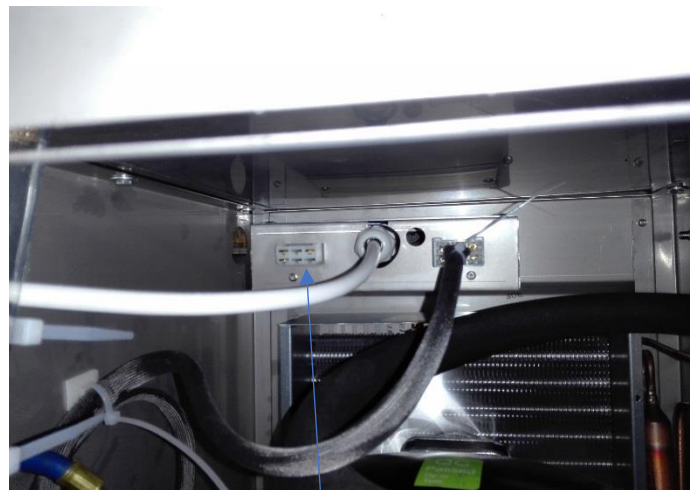
Middle hole is for power wire, make only on one side.

Two small holes is for mount DU.



Power wire.

Screw to mount DU on DBM.



Install DU power wire.