



# T&S BRASS AND BRONZE WORKS, INC.

2 Saddleback Cove / P.O. Box 1088  
Travelers Rest, SC 29690

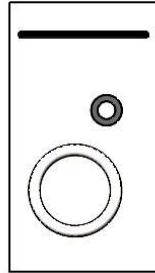
Model No.

**S-0107-J**

Item No.

Travelers Rest, SC: 800-476-4103 • Simi Valley, CA: 800-423-0150 • Fax: 864-834-3518 • www.tsbrass.com

## EVERSTEEL



Hose Washer &  
Hold Down Ring  
(Included)

This Space for Architect/Engineer Approval

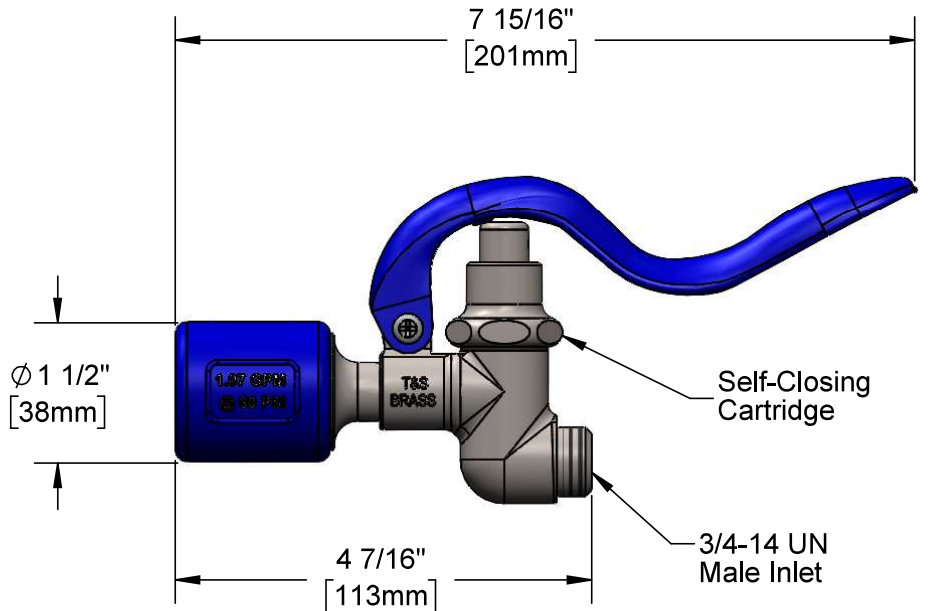
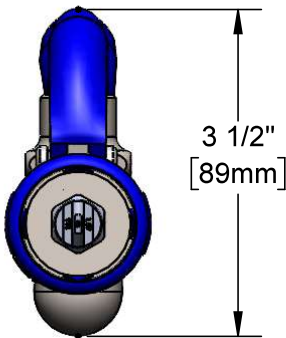
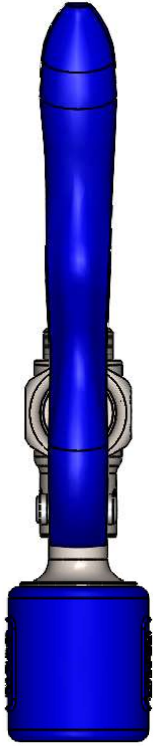
Job Name \_\_\_\_\_ Date \_\_\_\_\_

Model Specified \_\_\_\_\_ Quantity \_\_\_\_\_

Customer/Wholesaler \_\_\_\_\_

Contractor \_\_\_\_\_

Architect/Engineer \_\_\_\_\_



Flow Rate: 1.07 GPM [4.1 Lpm] @ 60 psi [4.14 bar]  
Spray Force: 7.2 Ozf [204 Gramf] @ 60 psi [4.14 bar]

### Product Specifications:

Blue Self-Closing Stainless Steel Pre-Rinse Spray Valve,  
1.07 GPM Spray Nozzle

### Product Compliance:

ASME A112.18.1 / CSA B125.1  
NSF 61 - Section 9  
NSF 372 (Low Lead Content)  
2019 DOE PRSV - Class II

Drawn: DMH | Checked: JRM | Approved: JHB | Date: 04/01/25 | Scale: 1:2 | Sheet: 1 of 2