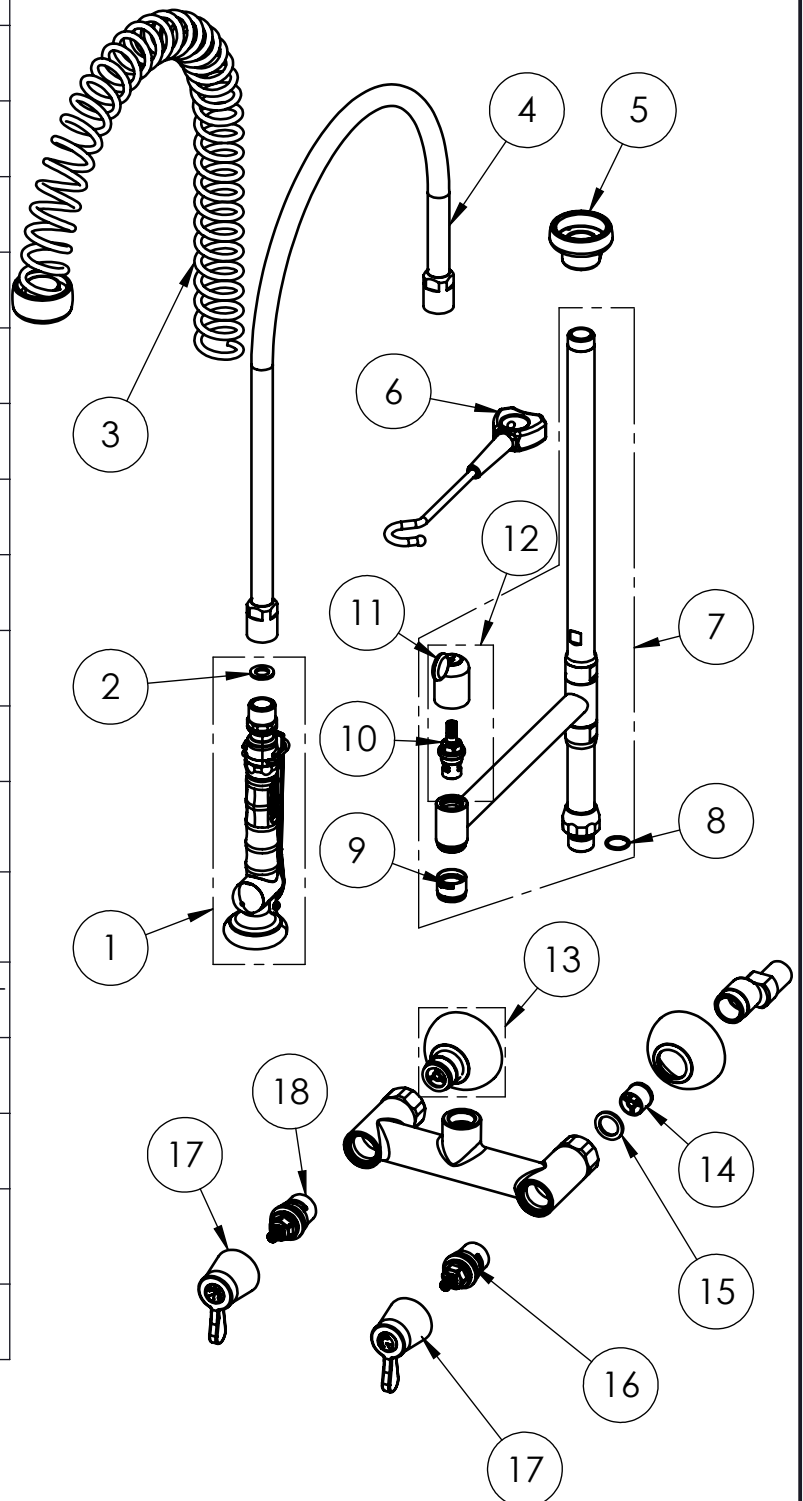


EXPLOSIONSZEICHNUNG



KBS Gastrotechnik GmbH – Schoßbergstraße 26 – 65201 Wiesbaden

ITEM NO.	SALES NO.	DESCRIPTION
1	P592/"color"	SPRAY VALVE (specify the color)
2	P074	FLAT GASKET 1/2" Ø18,5x11 sp.2mm
3	P511/"color"	OVERHEAD SPRING INOX SH80 (specify the color)
4	P510	82cm Ø17 F1/2"xF1/2" FLEXIBLE HOSE
5	P007	SPRING CHROMED SUPPORT
6	P580/"color"	SPRAY VALVE HOOK CHROMED PLATED
7	P625/D2/DT	SH70-80 RISER W.ADD ON TAP AND O-RING
8	P076	O-RING 2062 (Ø15.6x1.78), EPDM 70 PEROX
9	P626	5l/min STREAM REGULATOR OUTLET (Ø20 SPOUT)
10	V0D0	3/8" CERAMIC HEADWORK (RH)
11	HTC/R	"TOP" HANDLE W.RED CODED INDEX
12	V0DT/R	COMPLETE HANDLE W.RED CODED INDEX + CERAMIC HEADWORK KIT
13	P400	G1/2" MALE ECCENTRIC FLANGE w.BACKFLOW PREV.KIT
14	P031	BACKFLOW PREVENTER DW20-DN15
15	P107	FLAT GASKET 3/4" Ø24x17sp.2mm
16	V0F0/D	HIGH FLOW G3/4" CERAMIC HEADWORK (SHORT PIN - RH)
17	H009/color	"VOX" HANDLE W. COLOR CODED INDEX (specify the color B or R)
18	V0F0/S	HIGH FLOW G3/4" CERAMIC HEADWORK (SHORT PIN - LH)



TITLE / DESCRIZIONE
80 cm-tall SHRINK wall mount (135-175mm adjustable center distance) mixing faucet Pre-Rinse Unit with riser add-on faucet with 220mm swivel nozzle. G1/2" male inlets with check valves, G3/4" ¼ turn ceramic headworks, riser tube - stainless steel, brass, chrome plated, black details. 14L/min KLARCO P529 spray valve.

This drawing contains proprietary information which is the property of KLARCO S.R.L. without whose written permission it may not be copied, shown or handed to a third party or otherwise used

DRN / DIS	CHD / VER	APPR
SCALE / SCALA 1:6	DATE / DATA 25/03/2020	SHEET / PAG 2 of 2
NUMBER / CODICE DIS.	MODEL / PRODOTTO	
	380CN.R070	