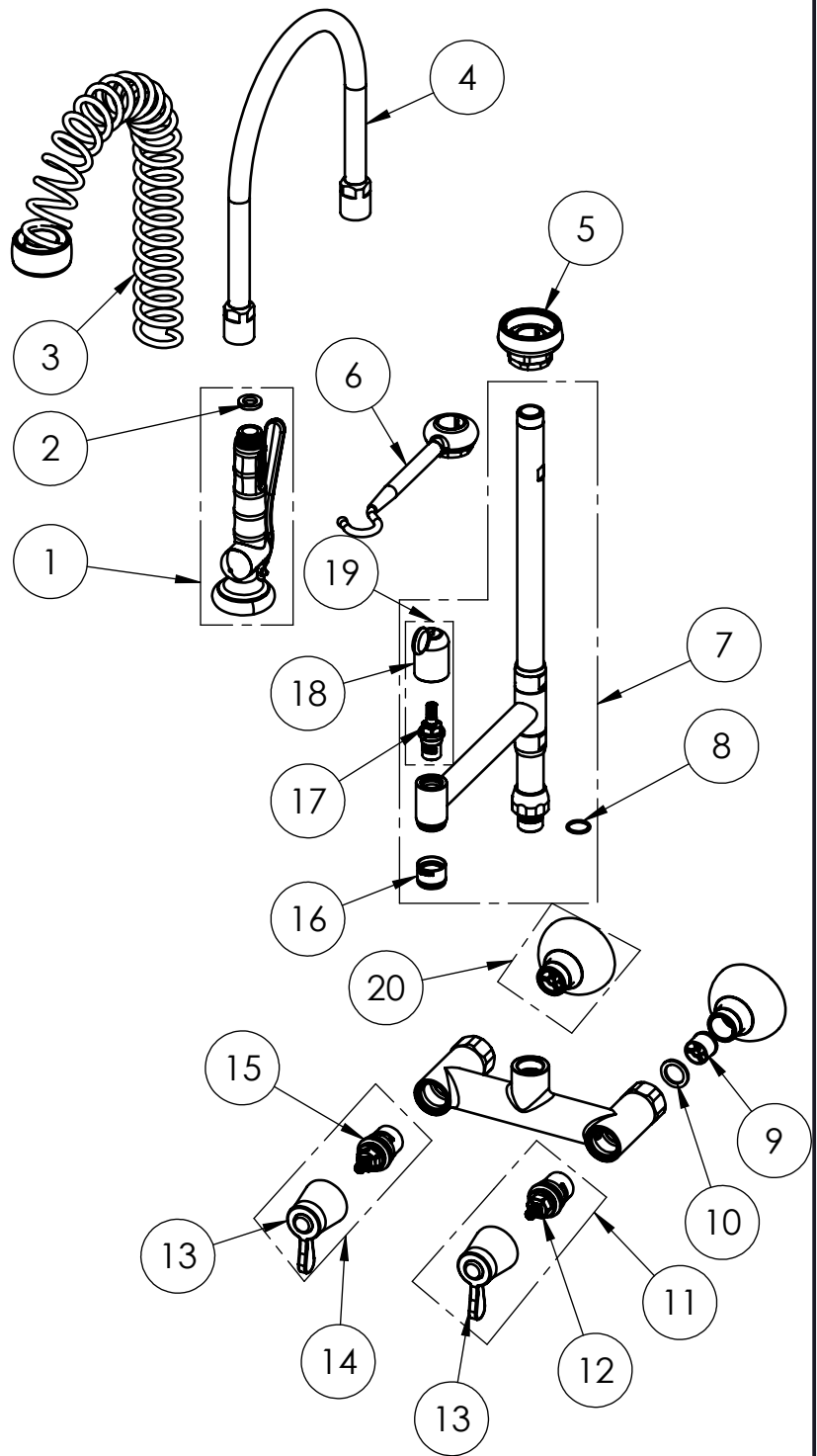


EXPLOSIONSZEICHNUNG



KBS Gastrotechnik GmbH – Schoßbergstraße 26 – 65201 Wiesbaden

ITEM NO.	SALES NO.	DESCRIPTION
1	P516/"color"	SPRAY VALVE "HOME" (specify the color)
2	P610	GASKET 1/2" Ø18,5x11 sp.3mm, FASIT OMNIA
3	P622/"color"	OVERHEAD SPRING SH60-70 (specify the color)
4	F153	Flexinox 60cm Ø14 (Øint.8) F1/2" F1/2"
5	P007	SPRING CHROMED SUPPORT
6	P580	SPRAY VALVE HOOK CHROMED PLATED
7	P606/D1/DT	KL60 RISER W.ADD ON TAP L.170 AND O-RING
8	P076	O-RING 2062 (Ø15.6x1.78), EPDM 70 PEROX
9	P031	BACKFLOW PREVENTER DW20-DN15
10	P107	FLAT GASKET 3/4" Ø24x17sp.2mm
11	V0F9/B	COMPLETE HANDLE W.BLUE CODED INDEX+HEADWORK KIT
12	V0F0/D	HIGH FLOW G3/4" CERAMIC HEADWORK (SHORT PIN - RH)
13	H009/color	"VOX" HANDLE W. COLOR CODED INDEX (specify the color B or R)
14	V0F9/R	COMPLETE HANDLE W.RED CODED INDEX +HEADWORK KIT
15	V0F0/S	HIGH FLOW G3/4" CERAMIC HEADWORK (SHORT PIN - LH)
16	P626	5l/min STREAM REGULATOR OUTLET (Ø20 SPOUT)
17	V0D0	3/8" CERAMIC HEADWORK (RH)
18	HTC/R	COMPLETE HANDLE W.RED CODED INDEX + CERAMIC HEADWORK KIT
19	V0DT/R	COMPLETE HANDLE W.RED CODED INDEX + CERAMIC HEADWORK KIT
20	P400	G1/2" MALE ECCENTRIC FLANGE w.BACKFLOW PREV.KIT



TITLE / DESCRIZIONE
60 cm-tall SHRINK wall mount (135-175mm adjustable center distance) mixing faucet Pre-Rinse Unit with riser add-on faucet with 170mm swivel nozzle. G1/2" male inlets with check valves, G3/4" ¼ turn ceramic headworks, riser tube - stainless steel, brass, chrome plated. 14L/min KLARCO "BEST" spray valve.

This drawing contains proprietary information which is the property of KLARCO S.R.L. without whose written permission it may not be copied, shown or handed to a third party or otherwise used

Questo disegno contiene informazioni di proprietà di KLARCO S.R.L. e senza la sua autorizzazione scritta non può essere copiato, mostrato o ceduto a terzi o in qualsiasi altro modo usato

DRN / DIS	CHD / VER	APPR
SCALE / SCALA 1:6	DATE / DATA 25/03/2020	SHEET / PAG 2 of 2
NUMBER / CODICE DIS.	MODEL / PRODOTTO 360CN.R070	