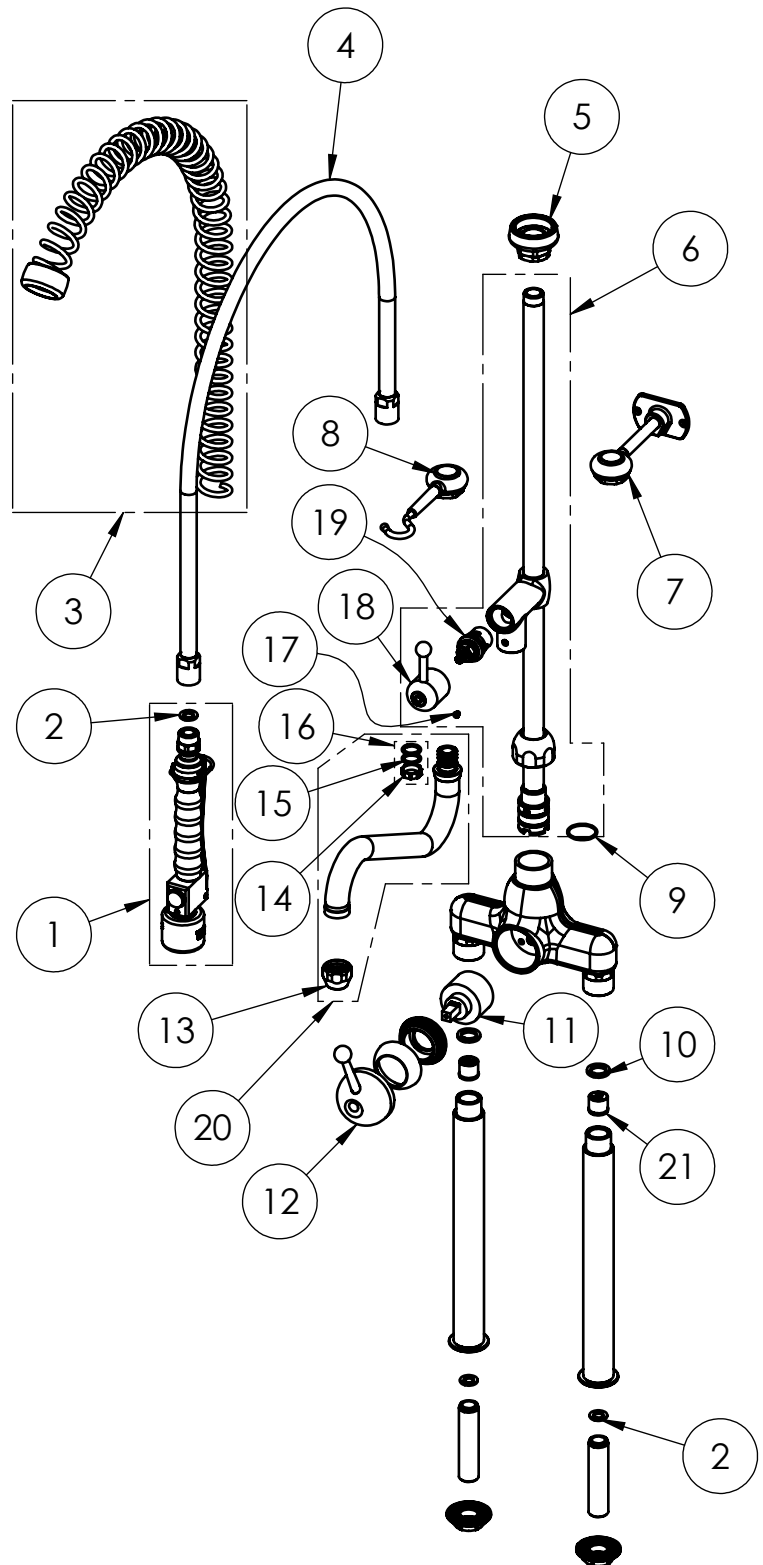


EXPLOSIONSZEICHNUNG



KBS Gastrotechnik GmbH – Schoßbergstraße 26 – 65201 Wiesbaden

ITEM NO.	SALES NO.	DESCRIPTION
1	P591	SPRAY VALVE "NEW Low-Flow" BLACK
2	P074	FLAT GASKET 1/2" Ø18,5x11 sp.2mm
3	P005	OVERHEAD SPRING "GREY"
4	P004	100cm Ø17 F1/2"xF1/2" FLEXIBLE HOSE
5	P007	SPRING CHROMED SUPPORT
6	P139/F6	650mm G1/2" RISER W.ADD ON TAP,HANLDE, CERAMIC HEADWORK AND O-RING
7	P034	115mm WALL BRACKETCHROMED
8	P035	SPRAY VALVE CHROMED SUPPORT
9	P391	O-RING 28x2 EPDM70
10	P610	FLAT GASKET 3/4" Ø24x17sp.3mm
11	V070	Ø47 MIXING CARTRIDGE
12	H019	LCA SHORT LEVER
13	P014	STREAM REGULATOR OUTLET (Ø25 SPOUT)
14	P592	SWIVEL SLEEVE
15	P072	O-Ring 119 (Ø 15,08 x 2,62mm) EPDM 70
16	P613	#2 OR+#1 SWIVEL SLEEVE KIT FOR FAUCET/OUTLET
17	P236	SPOUT SCREW (short)
18	H029	LCA ADD ON TAP HANDLE
19	V0F0/D	HIGH FLOW G3/4" CERAMIC HEADWORK (SHORT PIN - RH)
20	C0S3	SWING NOZZLE Ø25x250 h.60
21	P031	BACKFLOW PREVENTER DW20-DN15



TITLE / DESCRIZIONE

Extra robust and high flow elevated double-hole (155mm center distance) Pre-Rinse Unit with single lever (LCA) mixing faucet with 300mm risers, riser add-on faucet with 250mm swivel nozzle (Ø 25mm). 80mm-long mounting shanks, G1/2" male inlets with check valves, high flow ceramic cartridge and G3/4" high flow ¼ turn ceramic headwork, riser tube - stainless steel, brass, chrome plated. 4L/min KLARCO Low-Flow spray valve.

DRN / DIS

CHD / VER

APPR

SCALE / SCALA 1:8

DATE / DATA 03/03/2020

SHEET / PAG 2 of 2

NUMBER / CODICE DIS.

MODEL / PRODOTTO
3E.3092.4L.79

A4V

This drawing contains proprietary information which is the property of KLARCO S.R.L. without whose written permission it may not be copied, shown or handed to a third party or otherwise used

Questo disegno contiene informazioni di proprietà di KLARCO S.R.L. e senza la sua autorizzazione scritta non può essere copiato, mostrato o ceduto a terzi o in qualsiasi altro modo usato