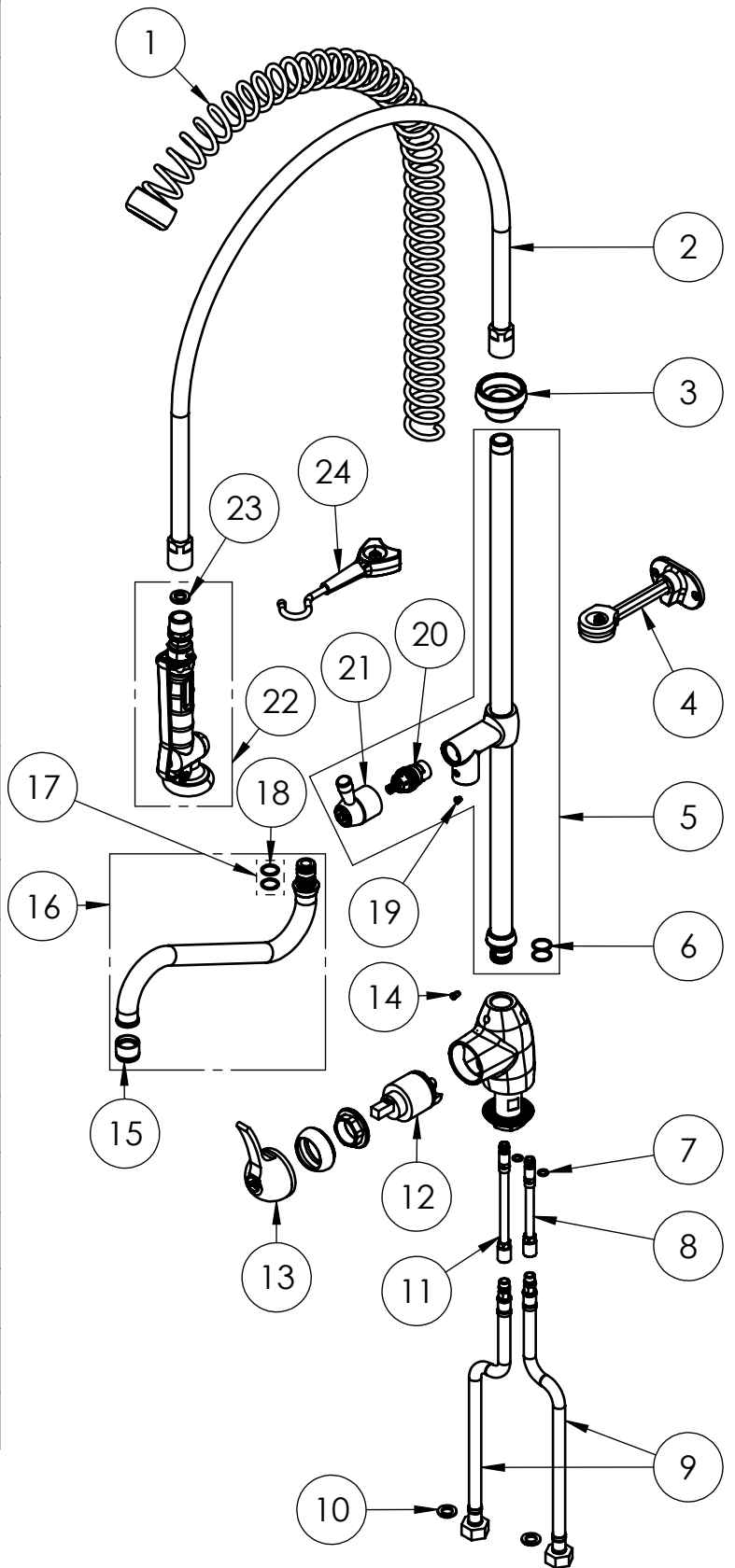


EXPLOSIONSZEICHNUNG



KBS Gastrotechnik GmbH – Schoßbergstraße 26 – 65201 Wiesbaden

ITEM NO.	SALES NO.	DESCRIPTION
1	P005	GRAY OVERHEAD SPRING
2	P664	L.110cm F1/2"xF1/2" FLEXIBLE HOSE
3	P090	SPRING SUPPORT
4	P092	Wall Bracket L.115mm (BLACK)
5	P266/C8	630mm g1/2" RISER WITH ADD-ON AND O-RINGS
6	P076	O-RING 2062 (Ø15.6x1.78), EPDM 70 PEROX
7	P158	O-RING 106 (6,75x1,78) in EPDM PEROX (cert.WRAS)
8	P615	EXTENSION COPPER PIPE L.115mm w.O-RING
9	F202	L.35cm Flex S.S. Hose Ø12-DN8 Female G1/2" W. CHECK VALVE
10	P074	FLAT GASKET 1/2" Ø18,5x11 sp.2mm
11	P616	EXTENSION COPPER PIPE L.140mm w.O-RING
12	V0P0	CARTRIDGE Ø40mm W.DISTR. (MOD.PISA)
13	H047	"PISA" CHROME PLATED LEVER
14	P241	SPOUT SCREW (Long)
15	P015	STREAM REGULATOR (Ø20 SPOUT)
16	C0S1	SWING NOZZLE Ø20x250x70
17	P612	#2OR KIT FOR FAUCET (STYL RST)
18	P097	O-RING 2056 (Ø14x1.78), EPDM70 PEROX
19	P236	SPOUT SCREW (short)
20	V0C0/D	1/2" CERAMIC HEADWORK (RH)
21	H021	DIVERTER KNOB
22	P499/N	SPRAY VALVE "BEST PRO" BLACK
23	P610	GASKET 1/2" Ø18,5x11 sp.3mm, FASIT OMNIA
24	P091	SPRAY VALVE HOOK (BLACK)



PRODUCT COMPLIANCE:

ROHS 2011/65/UE;
REACH 1907/2006;
BWGL UBA verified by
DVGW CERT third-party

TITLE / DESCRIZIONE
Deck-mount monoblock mixing temperature Pre-Rinse Unit. Chrome plated brass single hole with short lever and high flow ceramic cartridge; add-on faucet with 250mm swivel nozzle (Ø20mm); 50mm long mounting shank; G1/2" female inlets with check valves; G1/2" turn ceramic headwork; stainless steel riser tube; 14/min KLARCO "BEST PRO" spray valve.

DRN / DIS	CHD / VER	APPR
A.E.		
SCALE / SCALA	DATE / DATA	SHEET / PAG
1:7	16/01/22	2 of 2

This drawing contains proprietary information which is the property of KLARCO S.R.L. without whose written permission it may not be copied, shown or handed to a third party or otherwise used

Questo disegno contiene informazioni di proprietà di KLARCO S.R.L. e senza la sua autorizzazione scritta non può essere copiato, mostrato o ceduto a terzi o in qualsiasi altro modo usato

NUMBER / CODICE DIS.	MODEL / PRODOTTO
	3S.5001.19N.P7