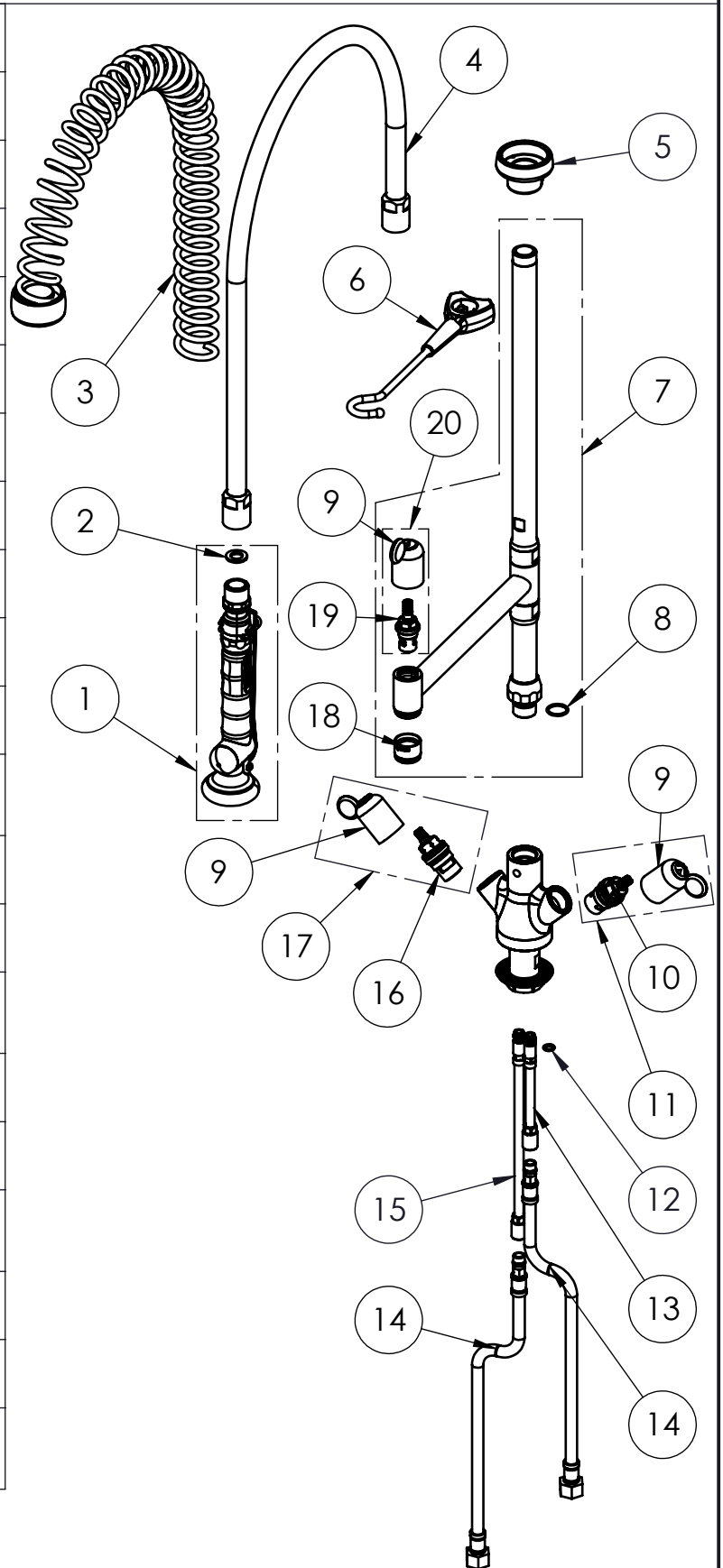


EXPLOSIONSZEICHNUNG



KBS Gastrotechnik GmbH – Schoßbergstraße 26 – 65201 Wiesbaden

ITEM NO.	SALES NO.	DESCRIPTION
1	P529/"color"	SPRAY VALVE (specify the color)
2	P074	FLAT GASKET 1/2" Ø18,5x11 sp.2mm
3	P623/"color"	OVERHEAD SPRING SH80 (specify the color)
4	P510	82cm Ø17 F1/2"xF1/2" FLEXIBLE HOSE
5	P090	SPRING SUPPORT </td
6	P599/"color"	SPRAY VALVE HOOK (specify the color)
7	P625/D2/DT	SH70-80 RISER W.ADD ON TAP AND O-RING
8	P076	O-RING 2062 (Ø15.6x1.78), EPDM 70 PEROX
9	HTC/R	"TOP" HANDLE W.RED CODED INDEX
10	V0C0/D	1/2" CERAMIC HEADWORK (RH)
11	V0CT/B	COMPLETE HANDLE W.BLUE CODED INDEX +CERAMIC HEADWORK KIT
12	P158	O-RING 106 (Ø6.75x1.78), EPDM 70
13	P615	EXTENSION COPPER PIPE L.115mm w.O-RING
14	F181	L.35cm Flex S.S. Hose Ø10-DN6X Female G3/8" W.Backflow Preventer (C)
15	P617	EXTENSION COPPER PIPE L.210mm w.O-RING
16	V0C0/S	1/2" CERAMIC HEADWORK (LH)
17	V0CT/R	COMPLETE HANDLE W.RED CODED INDEX +CERAMIC HEADWORK KIT
18	P626	5l/min STREAM REGULATOR OUTLET (Ø20 SPOUT)
19	V0D0	3/8" CERAMIC HEADWORK (RH)
20	V0DT/R	COMPLETE HANDLE W.RED CODED INDEX + CERAMIC HEADWORK KIT



TITLE / DESCRIZIONE	DRN / DIS	CHD / VER	APPR
80 cm-tall SHRINK Single hole, deck-mount, mixing temperature monoblock faucet Pre-Rinse Unit with riser add-on faucet with 220mm swivel nozzle. 50mm-long mounting shank, G3/8" female inlets with check valves, G1/2" ¼ turn ceramic headworks, riser tube - stainless steel, brass, chrome plated, black color details. 14L/min KLARCO P529 spray valve.	SCALE / SCALA 1:6	DATE / DATA 25/03/2020	SHEET / PAG 2 of 2
This drawing contains proprietary information which is the property of KLARCO S.R.L. without whose written permission it may not be copied, shown or handed to a third party or otherwise used	Questo disegno contiene informazioni di proprietà di KLARCO S.R.L. e senza la sua autorizzazione scritta non può essere copiato, mostrato o ceduto a terzi o in qualsiasi altro modo usato	NUMBER / CODICE DIS. MODEL / PRODOTTO 380N.R050CG	A4V