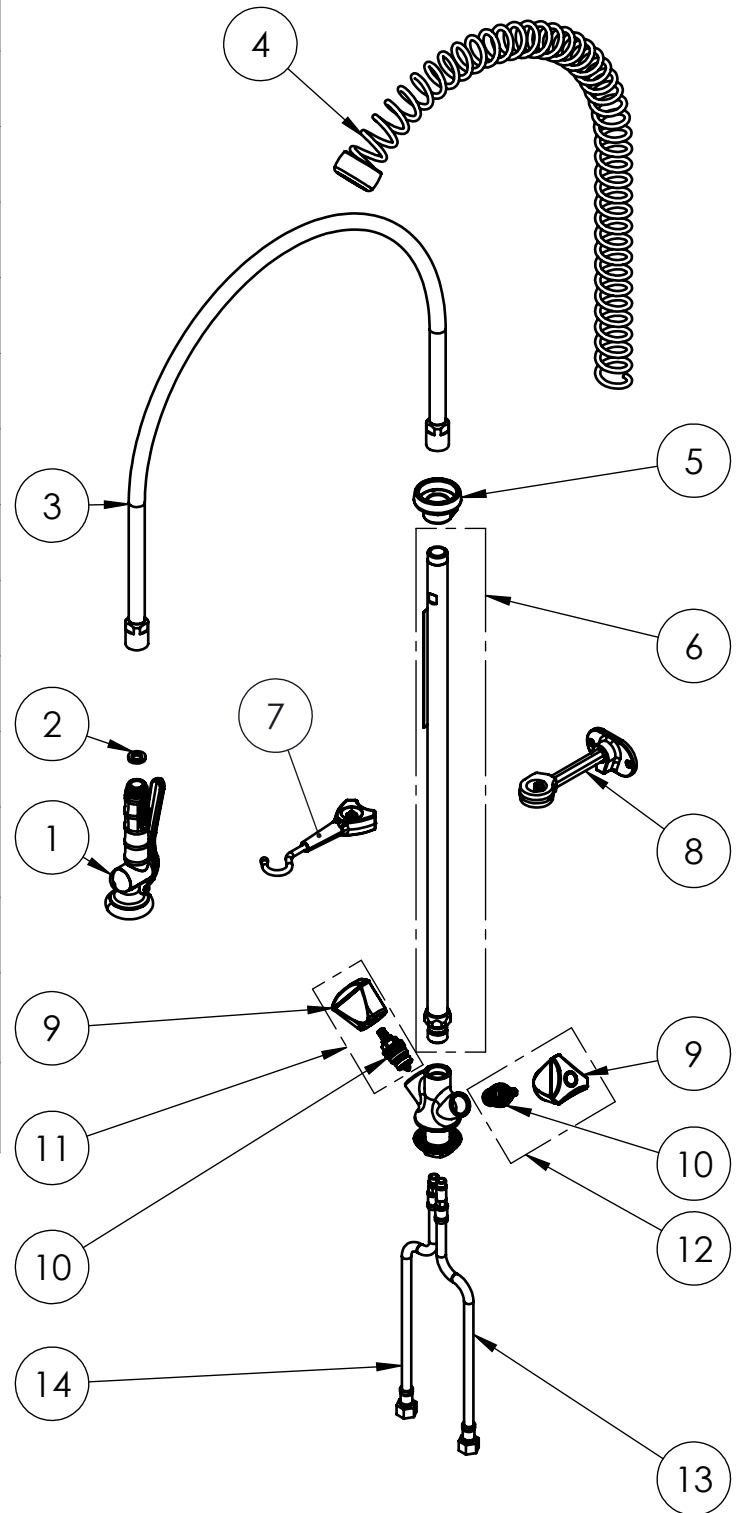


EXPLOSIONSZEICHNUNG



KBS Gastrotechnik GmbH – Schoßbergstraße 26 – 65201 Wiesbaden

ITEM NO.	SALES NO.	DESCRIPTION
1	P516/N	SPRAY VALVE "BEST HOME" BLACK
2	P610	GASKET 1/2" Ø18,5x11 sp.3mm, FASIT OMNIA
3	P163	100cm Ø17 F1/2"xF1/2" FLEXIBLE HOSE
4	P587	OVERHEAD SPRING "BLACK"
5	P090	SPRING SUPPORT
6	P607	KL100 650mm G1/2" RISER W.O-RING
7	P091	SPRAY VALVE HOOK (BLACK)
8	P092	Wall Bracket L.115mm (BLACK)
9	H033	"3Pe" HANDLE W. COLOR CODED INDEX (specify the color B or R)
10	VS0	G1/2" COMPRESSION HEADWORK
11	VS3/B	COMPLETE HANDLE W.BLUE CODED INDEX + COMPRESSION HEADWORK KIT
12	VS3/R	COMPLETE HANDLE W.RED CODED INDEX + COMPRESSION HEADWORK KIT
13	F182	L.35cm Flex S.S. Hose Ø10-DN6X Female G3/8" W.Backflow Preventer (L)
14	F181	L.35cm Flex S.S. Hose Ø10-DN6X Female G3/8" W.Backflow Preventer (C)



PRODUCT COMPLIANCE:

ROHS 2011/65/UE;
REACH 1907/2006;
KTW-BWGL

TITLE / DESCRIZIONE
Single hole, deck-mount, mixing temperature monoblock faucet Pre-Rinse Unit.
40mm-long mounting shank, G3/8" female inlets with check valve, G1/2" compression headworks, riser tube – stainless steel, brass, chrome plated, 14L/min KLARCO "BEST HOME" spray valve. Chrome plated handles.

DRN / DIS E.Artini	CHD / VER	APPR
SCALE / SCALA 1:8	DATE / DATA 10/08/22	SHEET / PAG 2 of 2
NUMBER / CODICE DIS.	MODEL / PRODOTTO 2M.2456.BH.S3	

This drawing contains proprietary information which is the property of KLARCO S.R.L. without whose written permission it may not be copied, shown or handed to a third party or otherwise used

Questo disegno contiene informazioni di proprietà di KLARCO S.R.L. e senza la sua autorizzazione scritta non può essere copiato, mostrato o ceduto a terzi o in qualsiasi altro modo usato