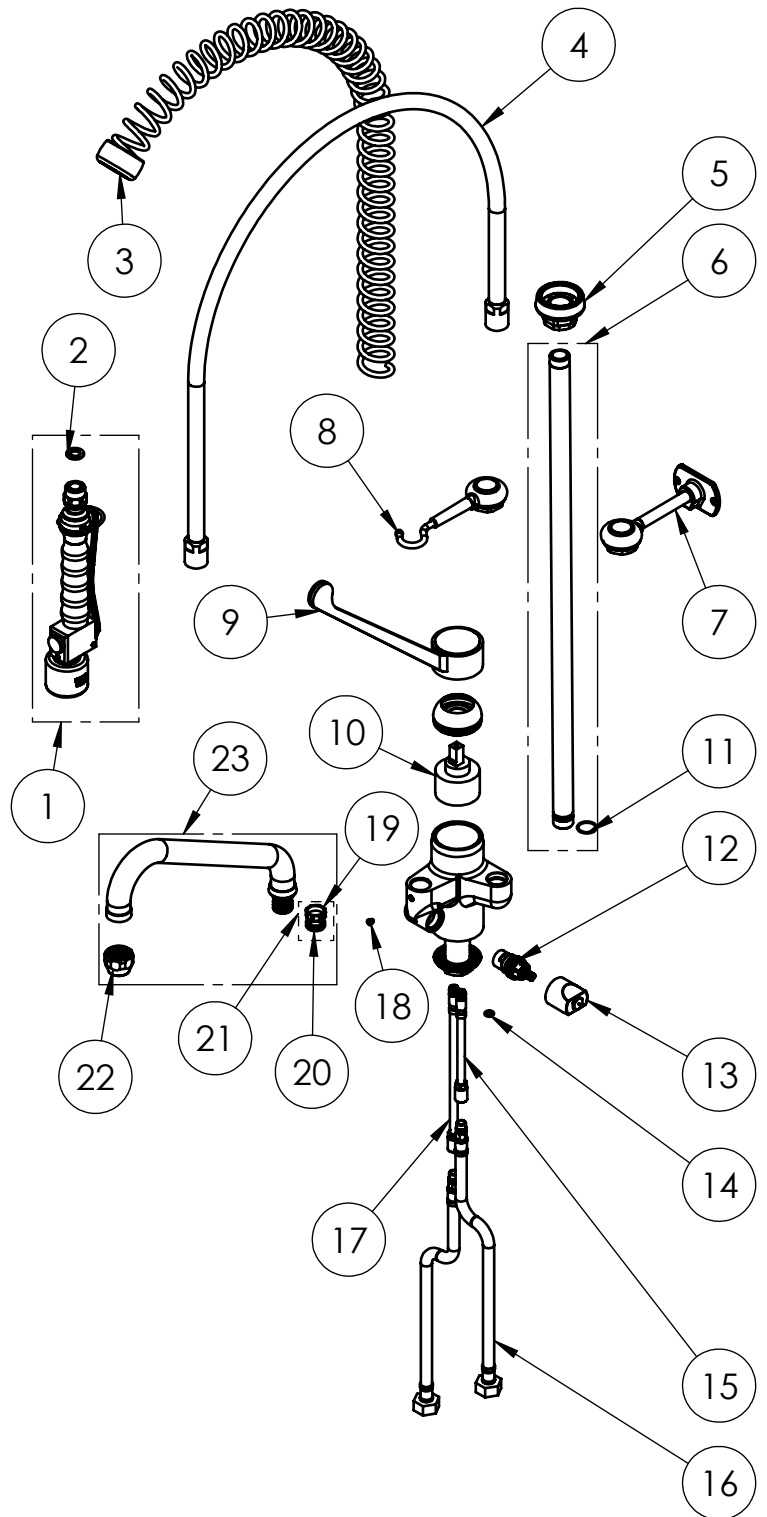


EXPLOSIONSZEICHNUNG



KBS Gastrotechnik GmbH – Schoßbergstraße 26 – 65201 Wiesbaden

ITEM NO.	SALES NO.	DESCRIPTION
1	P591	SPRAY VALVE "NEW Low-Flow" "BLACK"
2	P074	FLAT GASKET 1/2" Ø18,5x11 sp.2mm
3	P005	OVERHEAD SPRING "GREY"
4	P004	100cm Ø17 F1/2"xF1/2" FLEXIBLE HOSE
5	P007	SPRING CHROMED SUPPORT
6	P001	650mm G1/2" RISER W.O-Ring
7	P034	115mm WALL BRACKET CHROMED
8	P035	SPRAY VALVE CHROMED SUPPORT
9	H002	ELBOW OPERATED GRAY LEVER (L.220mm)
10	V070	Ø47 MIXING CARTRIDGE
11	P388	O-RING 18x1,5 EPDM 70sh.
12	V0C0/D	1/2" CERAMIC HEADWORK (RH)
13	H010	DIVERTER KNOB
14	P158	O-RING 106 (Ø6.75x1.78), EPDM 70
15	P616	EXTENSION COPPER PIPE L.140mm w.O-RING
16	F202	L.35cm Flex S.S. Hose Ø12-DN8 Female G1/2" W. BACKFLOW PREV.
17	P617	EXTENSION COPPER PIPE L.210mm w.O-RING
18	P236	SPOUT SCREW (short)
19	P592	SWIVEL SLEEVE
20	P072	O-Ring 119 (Ø 15,08 x 2,62mm) EPDM 70
21	P613	#2 OR+#1 SWIVEL SLEEVE KIT FOR FAUCET/OUTLET
22	P014	STREAM REGULATOR OUTLET (Ø25 SPOUT)
23	C082	SWING NOZZLE Ø25x245 h.70



TITLE / DESCRIZIONE	DRN / DIS	CHD / VER	APPR
Single hole, mixing temperature, deck mount Pre-Rinse Unit with 245mm long Sanitary Lever and 245mm swivel nozzle (Ø 25mm), switch for spray valve/ nozzle. 50mm-long mounting shank, G1/2" female inlets with check valves, high flow ceramic cartridge, riser tube - stainless steel, brass, chrome plated, Sanitary Lever - fiber glass reinforced Polyamide. 4L/min KLARCO Low-Flow spray valve	SCALE / SCALA 1:8	DATE / DATA 28/02/2020	SHEET / PAG 2 of 2
This drawing contains proprietary information which is the property of KLARCO S.R.L. without whose written permission it may not be copied, shown or handed to a third party or otherwise used	Numero disegno: 2E.2912.4L.72C82	MODEL / PRODOTTO 2E.2912.4L.72C82	A4V