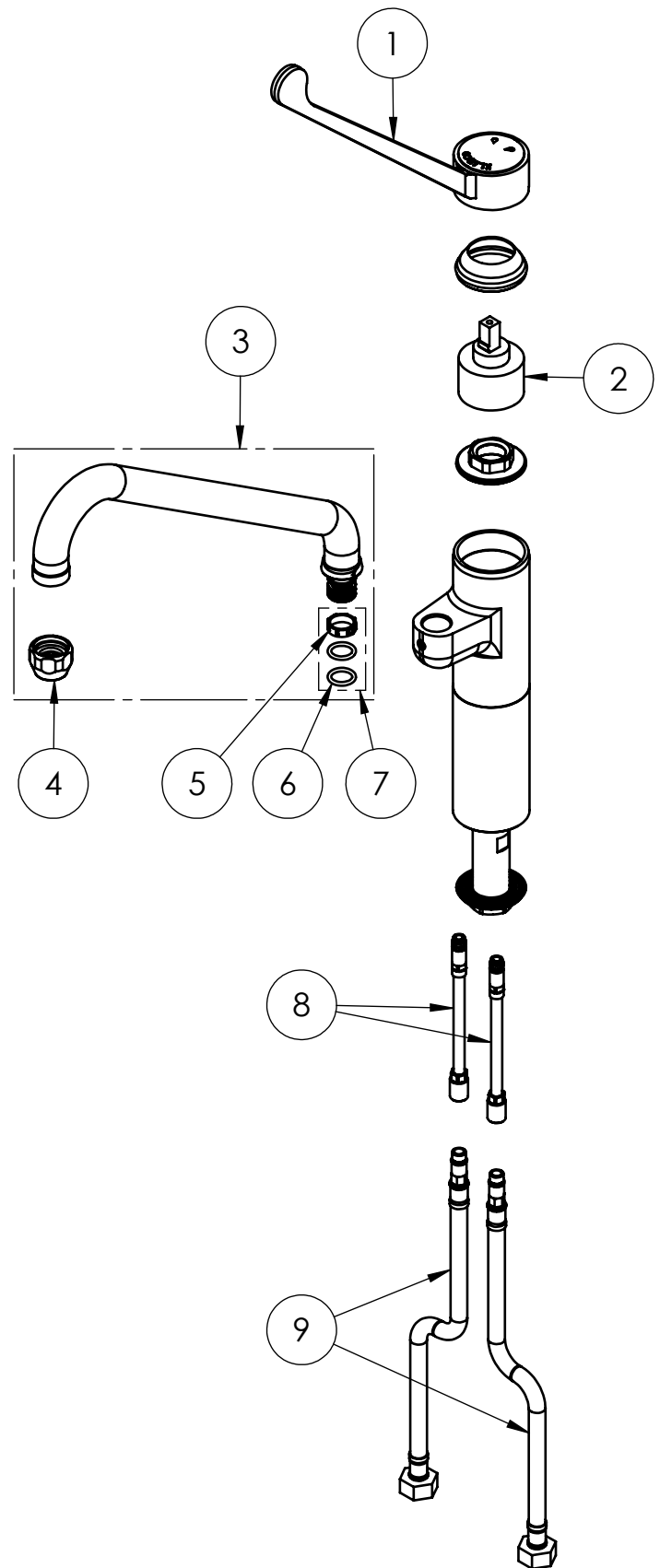


EXPLOSIONSZEICHNUNG



KBS Gastrotechnik GmbH – Schoßbergstraße 26 – 65201 Wiesbaden

ITEM NO.	SALES NO.	DESCRIPTION
1	H02K/N	ELBOW OPERATED BLACK LEVER (L.220mm)
2	V070	Ø47 MIXING CARTRIDGE
3	C087	SWING NOZZLE Ø25x295x130
4	P014	STREAM REGULATOR OUTLET (Ø25 SPOUT)
5	P592	SWIVEL SLEEVE
6	P072	O-Ring 119 (Ø 15,08 x 2,62mm) EPDM 70
7	P613	#2OR+#1SWIVEL SLEEVE KIT FOR FAUCET/OUTLET
8	P616	EXTENSION COPPER PIPE L.140mm w.O-RING
9	F011	L.35cm Flex S.S. Hose Ø12-DN8 Female G1/2"



PRODUCT COMPLIANCE:

KTW-BWGL
ROHS 2011/65/UE;
REACH 1907/2006;
DVGW Hygiene

TITLE / DESCRIZIONE	DRN / DIS	CHD / VER	APPR
Chrome plated brass single hole. Deck mount mixing faucet with 295mm swivel nozzle (Ø25); 220mm-long sanitary lever; high flow ceramic cartridge; 110mm-long stainless steel riser; G3/4"x80 mounting shank; G1/2" female inlets.	E.A.		
	SCALE / SCALA 1:5	DATE / DATA 27/12/22	SHEET / PAG 2 of 2
This drawing contains proprietary information which is the property of KLARCO S.R.L. without whose written permission it may not be copied, shown or handed to a third party or otherwise used	Questo disegno contiene informazioni di proprietà di KLARCO S.R.L. e senza la sua autorizzazione scritta non può essere copiato, mostrato o ceduto a terzi o in qualsiasi altro modo usato	NUMBER / CODICE DIS.	MODEL / PRODOTTO 1E.2908.87.76