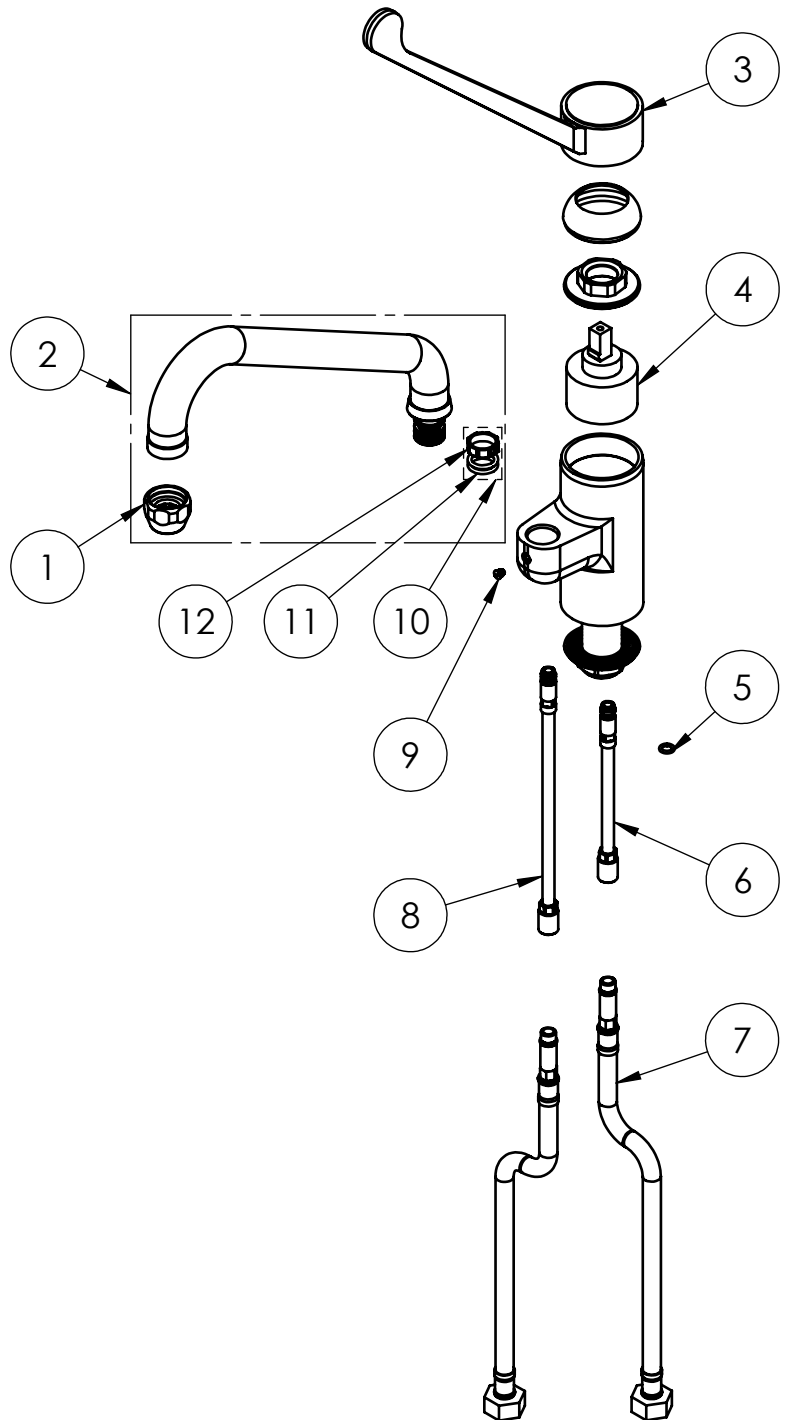


EXPLOSIONSZEICHNUNG



KBS Gastrotechnik GmbH – Schoßbergstraße 26 – 65201 Wiesbaden

ITEM NO.	SALES NO.	DESCRIPTION
1	P014	STREAM REGULATOR OUTLET (Ø25 SPOUT)
2	C082	SWING NOZZLE Ø25x245 h.70
3	H006	ELBOW OPERATED BLACK LEVER (L.220mm)
4	V070	Ø47 MIXING CARTRIDGE
5	P158	O-RING 106 (Ø6.75x1.78), EPDM 70
6	P616	EXTENSION COPPER PIPE L.140mm w.O-RING
7	F010	L.35cm Flex S.S. Hose Ø12-DN8 Female G1/2" (L)
8	P617	EXTENSION COPPER PIPE L.210mm w.O-RING
9	P236	SPOUT SCREW (short)
10	P613	#2 OR+#1 SWIVEL SLEEVE KIT FOR FAUCET/OUTLET
11	P072	O-Ring 119 (Ø 15,08 x 2,62mm) EPDM 70
12	P592	SWIVEL SLEEVE



TITLE / DESCRIZIONE	DRN / DIS	CHD / VER	APPR
Single hole, deck-mount mixing faucet with 220mm long black Sanitary Lever and 245mm swivel nozzle (Ø 25mm). 50mm-long mounting shank, G1/2" female inlets, high flow ceramic cartridge, brass, chrome plated, Sanitary Lever - fiber glass reinforced Polyamide	SCALE / SCALA 1:5	DATE / DATA 03/03/2020	SHEET / PAG 2 of 2
This drawing contains proprietary information which is the property of KLARCO S.R.L. without whose written permission it may not be copied, shown or handed to a third party or otherwise used	Questo disegno contiene informazioni di proprietà di KLARCO S.R.L. e senza la sua autorizzazione scritta non può essere copiato, mostrato o ceduto a terzi o in qualsiasi altro modo usato	NUMBER / CODICE DIS. MODEL / PRODOTTO 1E.2904.82.76	A4V