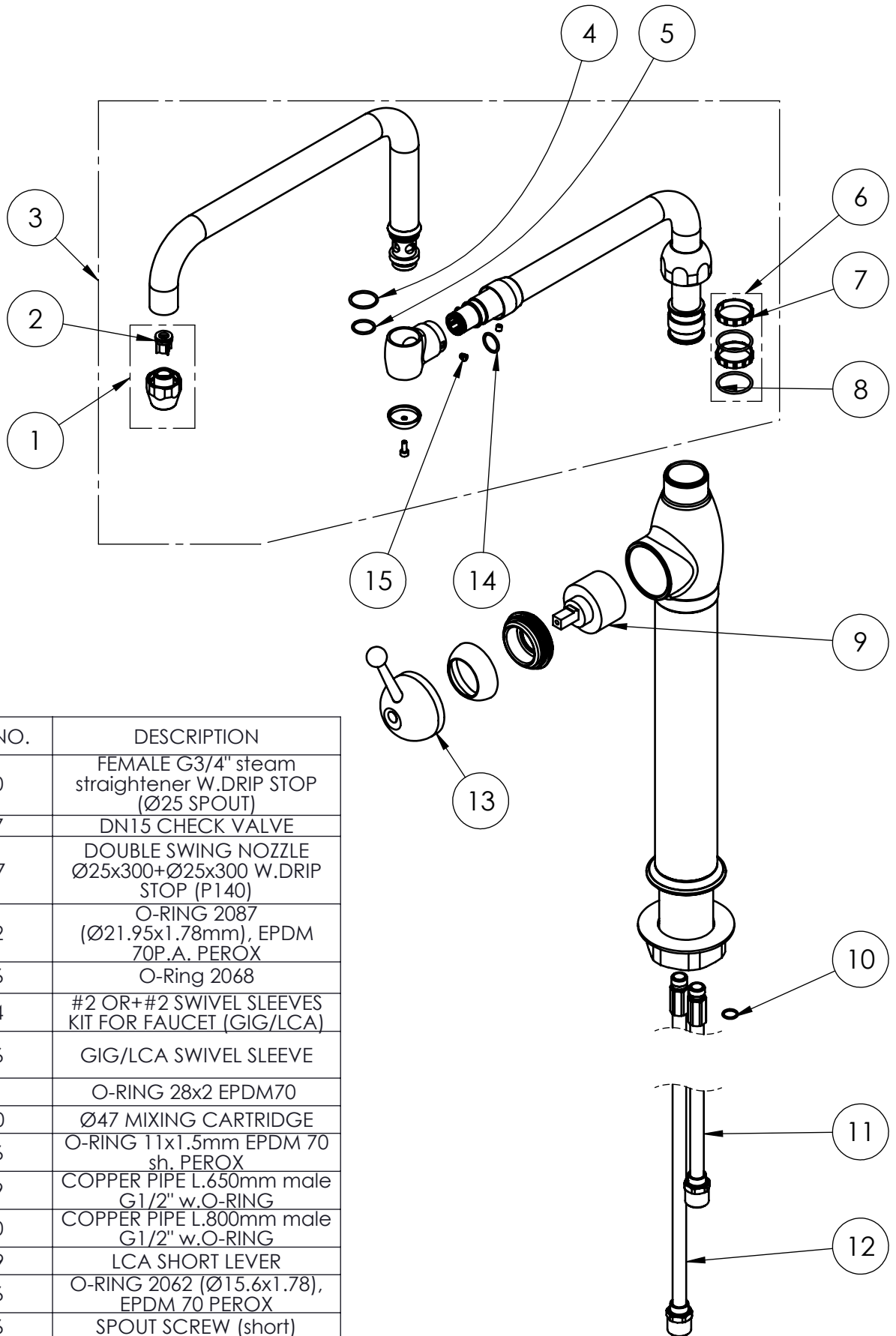


# EXPLOSIONSZEICHNUNG



KBS Gastrotechnik GmbH – Schoßbergstraße 26 – 65201 Wiesbaden



ITEM NO.	SALES NO.	DESCRIPTION
1	P140	FEMALE G3/4" steam straightener W.DRIP STOP (Ø25 SPOUT)
2	P337	DN15 CHECK VALVE
3	COE7	DOUBLE SWING NOZZLE Ø25x300+Ø25x300 W.DRIP STOP (P140)
4	P512	O-RING 2087 (Ø21.95x1.78mm), EPDM 70P.A. PEROX
5	P086	O-Ring 2068
6	P614	#2 OR+#2 SWIVEL SLEEVES KIT FOR FAUCET (GIG/LCA)
7	P566	GIG/LCA SWIVEL SLEEVE
8	P391	O-RING 28x2 EPDM70
9	V070	Ø47 MIXING CARTRIDGE
10	P286	O-RING 11x1.5mm EPDM 70 sh. PEROX
11	P619	COPPER PIPE L.650mm male G1/2" w.O-RING
12	P620	COPPER PIPE L.800mm male G1/2" w.O-RING
13	H019	LCA SHORT LEVER
14	P076	O-RING 2062 (Ø15.6x1.78), EPDM 70 PEROX
15	P236	SPOUT SCREW (short)

TITLE / DESCRIZIONE	DRN / DIS	CHD / VER	APPR
Extra robust and high flow single hole, deck-mount, single lever (LCA) mixing faucet for pot filling with 300mm riser, 300+300mm, 360° double-joint swivel nozzle (Ø 25mm) and Drip Stop. 80mm-long mounting shank, G1/2" male inlets, high flow ceramic cartridge, brass, chrome plated	SCALE / SCALA 1:5	DATE / DATA 09/03/2020	SHEET / PAG 2 of 2
This drawing contains proprietary information which is the property of KLARCO S.R.L. without whose written permission it may not be copied, shown or handed to a third party or otherwise used	Questo disegno contiene informazioni di proprietà di KLARCO S.R.L. e senza la sua autorizzazione scritta non può essere copiato, mostrato o ceduto a terzi o in qualsiasi altro modo usato	NUMBER / CODICE DIS. MODEL / PRODOTTO 1E.2943.E7.79	A4V